



Inclined Circular Vibrating Screen CK 402 CK 403

PROVEN QUALITY – GREAT FLEXIBILITY – EASY OPERATION

ThyssenKrupp circular vibrating screens are used for screening of rock, ore, coal and similar bulk materials, as well as in recycling and waste disposal. The size of the machines is tailored to customers requirements and installation conditions. ThyssenKrupp screens can handle higher throughput rates and meet demands for accurate separation according to grain size.

FEATURES

- **Screen cloths**
 - Perforated plates, polyurethane panels or woven wire available
 - The design permits the use of screen covers made by different manufactures
 - Mesh size can be adapted to the requirements of a certain application
- **Adjustability**
 - Modifiable stroke up to 13 mm by unbalanced weights
 - Adjustable rotational speed
- **Screen tray**
 - Bolted design without any welding at the side walls ensures maximum fatigue strength
- **Vibration isolation**
 - Mitigation of dynamic loads by steel springs
- **Roller bearings**
 - Special spherical roller bearings for high vibrations
- **Drive**
 - V-belt drive with protection hood
- **Options:**
 - Dedusting hood
 - Supporting frame
 - Chutes

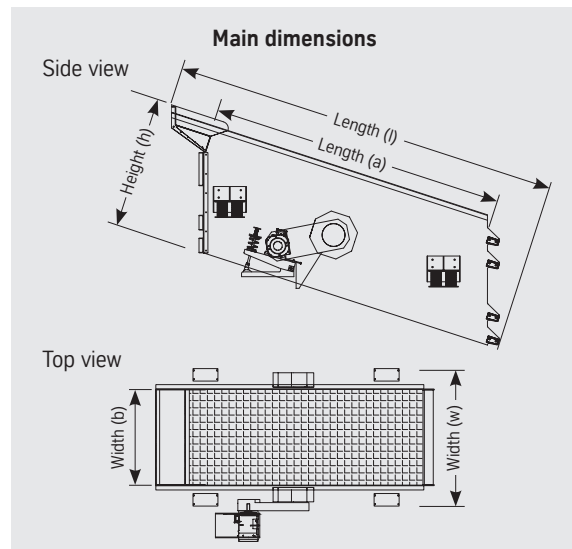
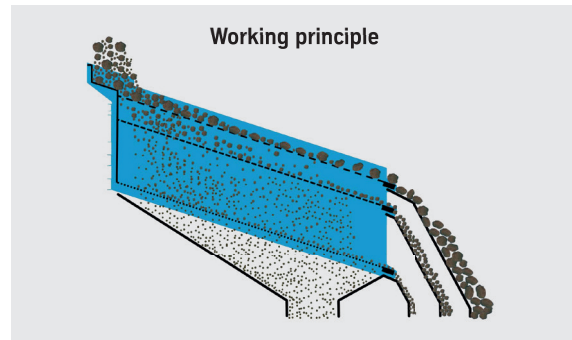
INCLINED CIRCULAR VIBRATING SCREENS – ADVANCED SCREEN TECHNOLOGY

Inclined Circular Vibrating Screen CK 402 / CK 403 - TECHNICAL SPECIFICATION

| General data | |
|--------------------|---------------------------------|
| Materials: | Limestone, ore, quartzite, etc. |
| Maximum feed size: | 200 mm edge length |

| Screen | |
|--|--|
| Type of screen: | Circular-motion |
| Screen area dimensions (a x b): | 3,000 mm x 1,280 mm |
| Screening area (per deck): | 4 m ² |
| Number of screen decks: | 2 or 3 |
| Screen covering: | Perforated plate, polyurethane or woven wire |
| Inclination: | 18° |
| Number of shafts: | 1 |
| Vibration isolation: | Steel springs |
| Main dimensions (l x w x h) – 2 decks: | 3,930 mm x 1,860 mm x 1,090 mm |
| – 3 decks: | 3,930 mm x 1,860 mm x 1,390 mm |
| Total weight | – 2 decks: up to 2.1 mt – 3 decks: up to 2.5 mt |

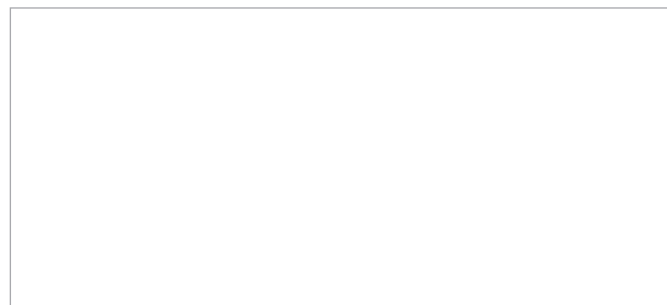
| Drive | |
|----------------|--|
| Drive concept: | V-belt |
| Motor power | – 2 decks: 5.5 kW – 3 decks: 7.5 kW |



CONTACT

ThyssenKrupp Industrial Solutions AG
 Business Unit Resource Technologies
 Graf-Galen-Straße 17, 59269 Neubeckum
 Germany
 Phone: +49 2525 99-0
 Email: info.tkfen@thyssenkrupp.com
www.thyssenkrupp-industrial-solutions.com

SALES REPRESENTATIVE



© 2015 Product specifications and prices are subject to change without notice or obligation. The photographs and/or drawings in this document are for illustration purposes only. The operation values are considered to be approximate and will be finally determined on the basis of the specific task and the material characteristics. The only warranty applicable to our equipment is the standard written warranty applicable to the particular product and sale and ThyssenKrupp makes no other warranty of accuracy, reliability, completeness, merchantability or fitness for any purpose, express or implied. Products and services listed may be trademarks, service marks or trade-names of ThyssenKrupp and/or its subsidiaries in Germany and other countries. All rights are reserved.

**ThyssenKrupp
 Industrial Solutions**



ThyssenKrupp

RT/MIN-CRT-SM/CK402-403/Germany/e1